

HD-MAX II

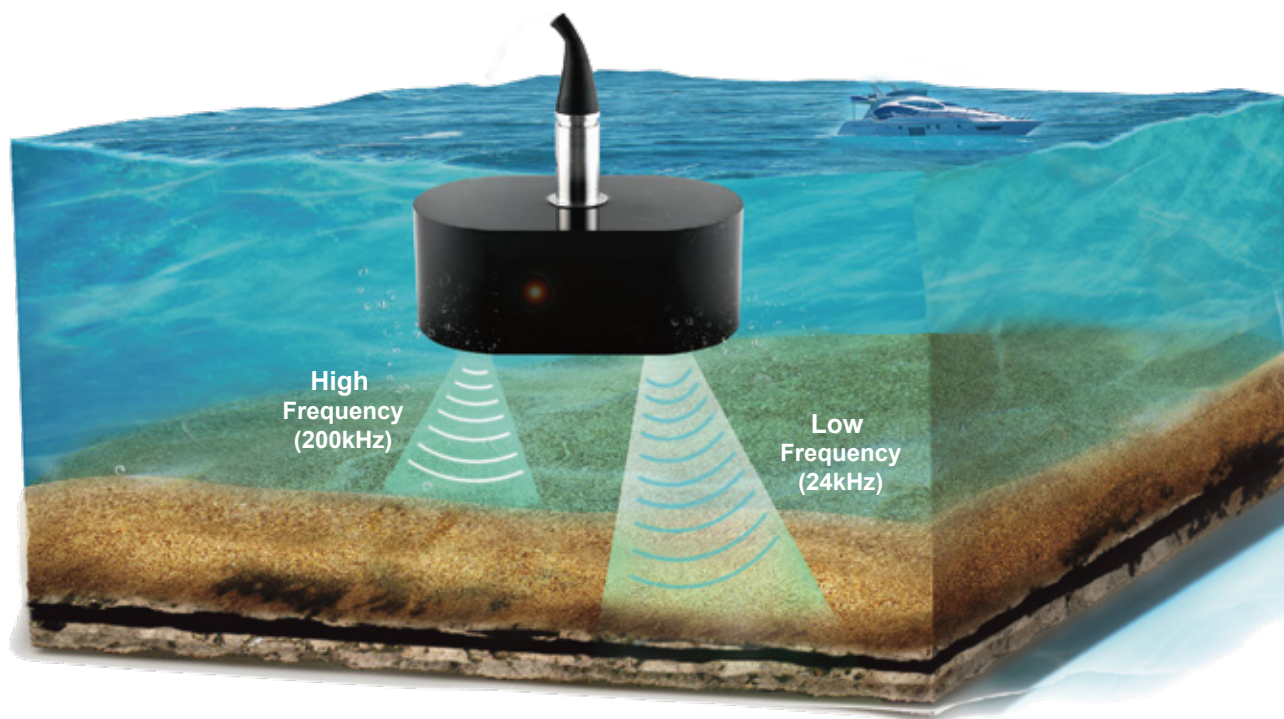
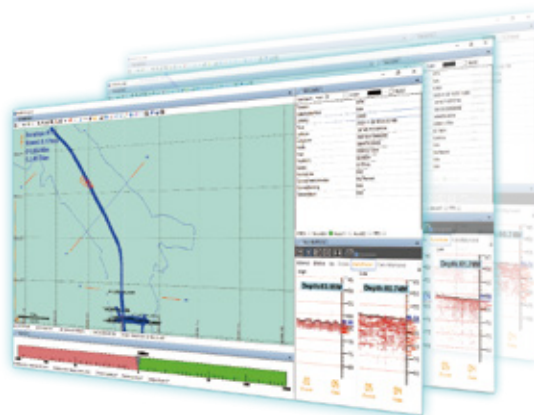
Dual-Frequency Echo Sounder



HD-MAX II

Dual-Frequency Echo Sounder

HD-MAX II dual-frequency echo sounder redefines underwater surveying. Its enhanced host unit is water-resistant, portable, and offers versatile interfaces. The integrated temperature sensor in the transducer enables precise sound velocity calibration, and the fully automated algorithm tackles challenging terrains. Ideal for a wide range of underwater environments, including dredging, siltation, high sediment areas, and deep waters, HD-MAX II is the unrivaled choice for hydrographic professionals.



FEATURES



Unmatched Accuracy & Efficiency

Dual-frequency ensures high-precision measurements. Real-time sound velocity calibration using integrated temperature sensors and a 50Hz ping rate deliver fast, reliable data capture. An adaptive depth algorithm further optimizes performance in diverse terrains.



Seamless User Experience

Integrated software streamlines your workflow. A bright 15" display provides a clear view of data, while intuitive buttons offer easy control. 128GB+1TB storage with Windows 10 ensures efficient data processing.



Built for Tough Conditions

The IP66-rated housing protects against harsh environments. Its lightweight, portable design facilitates easy transport, and the sturdy build ensures long-lasting durability. Versatile connectivity options include PPS, Trigger support, and multi-format data output for effortless data sharing.

APPLICATIONS



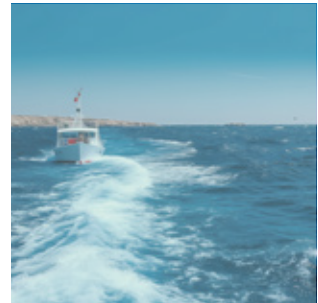
Submarine Topography
Surveying



Dredging and Sediment
Removal



High Turbidity
Measurements



Deep-water Depth
Measurement

TECHNICAL SPECIFICATIONS

Echo Sounder	Dimension	441mm*105mm*324mm	
	Weight	8.1kg	
	Housing Material	Magnesium alloy	
	IP Rating	IP66	
	Ping Rate	50Hz	
	Screen	15 inches; Resolution: 1280 x 1024@60Hz	
	CPU	2.0GHz, Quad-core	
	RAM	16GB	
	Storage	128GB + 1TB SSD	
	Input Power	10-30VDC, 110-240VAC	
	Power Consumption	50W	
	Operating Temperature	-5°C to +55°C	
	Storage Temperature	-20°C to +60°C	
	Interfaces	PPS*1, Trigger*1, RJ45*1, RS232*3, USB*3, HDMI*1, Transducer*1, Power*1	
	Raw Data Output Format	Standard NMEA 0183, DESO 25, ODOM, Knudsen, Bathy, Echotrac	
Transducer	Transducer Type	High Channel	Low Channel
	Operation Frequency	100kHz ~ 1MHz	10kHz ~ 50kHz
	Depth Range	0.15 ~ 300m @200kHz	1~ 2000m @24kHz
	Accuracy	±0.01m ± 0.1% of depth @200kHz	±0.1m ± 0.1% of depth @24kHz
	Resolution	1cm@200kHz	10cm@24kHz
	Temperature Sensor	-55°C to +125°C; Resolution 0.5°C	
Software	SLHydro Sounder	Project Management, Coordinate Systems, Navigation and Basemap, Multiple External Sensors, Data Acquisition, Planned Deployment, Data Processing, Multi-sensor Calibration, Multi-format Data Export	



*All parameters listed are theoretical or based on laboratory test.

*Specifications and accessories are subject to change. We reserve the right to the final interpretation.



AUTHORIZED DISTRIBUTION PARTNER

25M121

Hi-Target Surveying Instrument Co., Ltd

ADD: Hi-Target Headquarters, No. 6, Hongchuang 2nd Street, Nancun Town, Panyu District, 511442 Guangzhou, China
www.hi-target.com.cn +86-20-28688296 sales@hi-target.com.cn