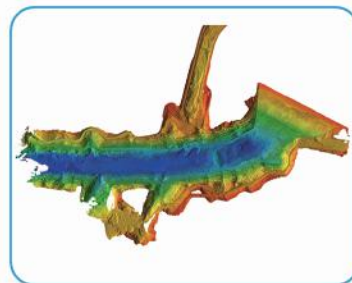


System Extension

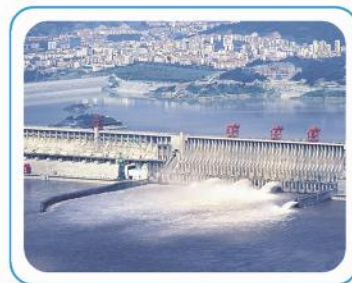
Multiple applications, available for singlebeam echosounder, ADCP, side scan sonar.



Applications



Underwater topographic survey



Hydrographic survey



Underwater landscape survey

Technical Specifications

| | | |
|----------------------------------------|-------------------------|--------------------------------------------------------------------------------------------------------------------------------------------------------------------------------------------------------------------------------------------------------------------------------------------------------------------|
| Hull Parameters | Dimensions | 1050mm*550mm*270mm |
| | Weight of base boat | 14KG |
| | Hull material | Kevlar & carbon fiber high-strength composite |
| | Hull design | Double M shape, low barycenter, small resistance, stable sailing |
| | Anti-wave&wind | 3rd wind level and 2nd wave level |
| Power and Electrical Parameters | Battery endurance | 4h@2m/s (The battery pack can be added to improve the battery life) |
| | Top speed | 4.5m/s |
| | Propulsion | Detachable modular ducted propeller |
| | Propeller type | Brushless DC |
| Safety Guarantee | Direction control | Veering without steering engine and sailing reversely |
| | Auto-return | Auto-return while low battery or signal dropped |
| Ashore Base | Operating system | Windows |
| | Communicating mode | RF point to point in real-time |
| | Transmission range | 2,000m |
| | Navigation mode | Manual or auto-Pilot |
| | Propeller | Dual Propeller |
| Intelligent Controller | Communicating mode | RF point to point in real-time |
| | Transmission range | 2,000m |
| | Water proof | IP65 |
| Sounding Performance | Function | Real-time switching operation mode, control ship speed, steering and other functions, display the basic information of unmanned ship in real time |
| | Work frequency | 200KHz |
| | Beam angle | 5°±0.5° |
| | Sounding range | 0.15~300m |
| | Sounding accuracy | 1cm±0.1%h (h=depth) 1cm depth resolution |
| Positioning Accuracy | RTK | Horizontal: ±8mm+1ppm RMS Vertical: ±15mm+1ppm RMS |
| | Beacon (optional) | 0.5m (1δ) |
| | SBAS | 1.0m CEP |
| System Software | Hull control system | Autopilot, hull parameter control, coordinate conversion and etc |
| | HiMAX sounding software | Supporting parameter configuration, coordinate conversion, depth location collecting, post-processing (simulative depth and digital depth combined for conveniently judging false depth), sampling feature point randomly, RTK and tide document for tide gauging, multiple data formats for result output and etc |

Descriptions and specifications subject to change without notice.

Hi-Target AUTHORIZED DISTRIBUTION PARTNER

20D110 T

Hi-Target Surveying Instrument Co., Ltd.

ADD: Building 13, Tian'An Technology Zone HQ Center, No. 555, the North of Panyu Rd, Panyu District, 511400 Guangzhou, China.
TEL: +86 20 2288 3944 E-mail: info@hi-target.com.cn www.hi-target.com.cn

HI-TARGET
Surveying the World, Mapping the Future.

iBoat BS2 Intelligent Surveying USV



©2018 Hi-Target Surveying Instrument Co., Ltd. All rights reserved.

System Introduction

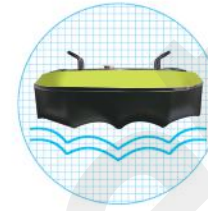
Hi-Target intelligent USV —— iBoat BS2 is a swift, efficient and robust unmanned surface vehicle, offering the portable, fast, secure and multi-functional service for hydrographic survey and all kinds of water related applications in different environments like rivers, lakes, reservoirs, harbors and even torrents.



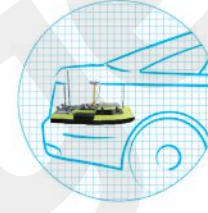
System Composition and Features

Hull Structure

- Double-M shape hull
Streamline design
More Stable



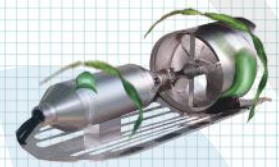
- Only 14 KG weight
Small and portable hull convenient for transmission
Available placement in the car trunk



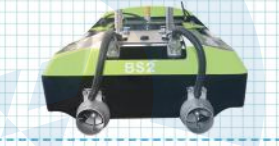
- Kevlar & carbon fiber high-strength posite ,resistant to impact



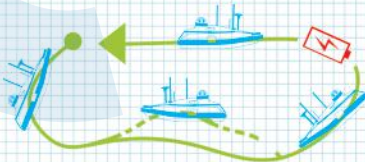
Power System



- Propellers are applied with ducted design and protective shield outside to prevent aquatic plants and fishing net from twining.



- Inovative modular design making the propallers easy to remove and maintain.
Paralleled level with the boat and convenient for transmission and placement.



- Auto-return while low battery or dropped signal .

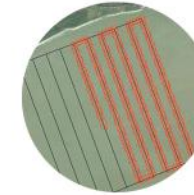
Base System



- Industrial controller is of easy use with one key to switch between manual and automatic mode while control distance reaches 2 Km.



- Applying directive antenna,communicating distance is more than 2 Km.



- Automatic operation,automatic navigation,auto-return to fixed point and switch between manual and automatic mode at any time.

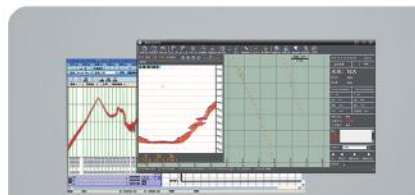
Hi-Target Sensors



- The Hi-Target HD-510 shows fantastic performance with its high-accuracy professional sounding module.The 0.15~300m sounding range adapts to all kinds of complex topographic surveying.



- With Hi-Target high-accuracy GNSS RTK module or DGPS beacon module,the location devices support BDS location equipped with multiple communicating modes including UHF radio, beacon and SBAS.



- HiMAX surveying software is available for collecting,guiding and post ccessing.Simulative depth and digital depth are combined for convenie judging true water depth.