

System Recommendations

Operating system		Microsoft Windows 7/8/10 (64-bit)	
Hardware	Minimum	Recommended	
Processor	Intel Core i3	Intel Core i5	
RAM	4GB	8GB	
ROM	1GB	1TB	
GPU	Direct X9 compatible integrated graphics	Direct X9 compatible 2GB discrete graphics	
Software License		Software registration code	
Supported Language		Chinese/ English/ French/ Spanish/ Portuguese/ Japanese	



AUTHORIZED DISTRIBUTION PARTNER

200109

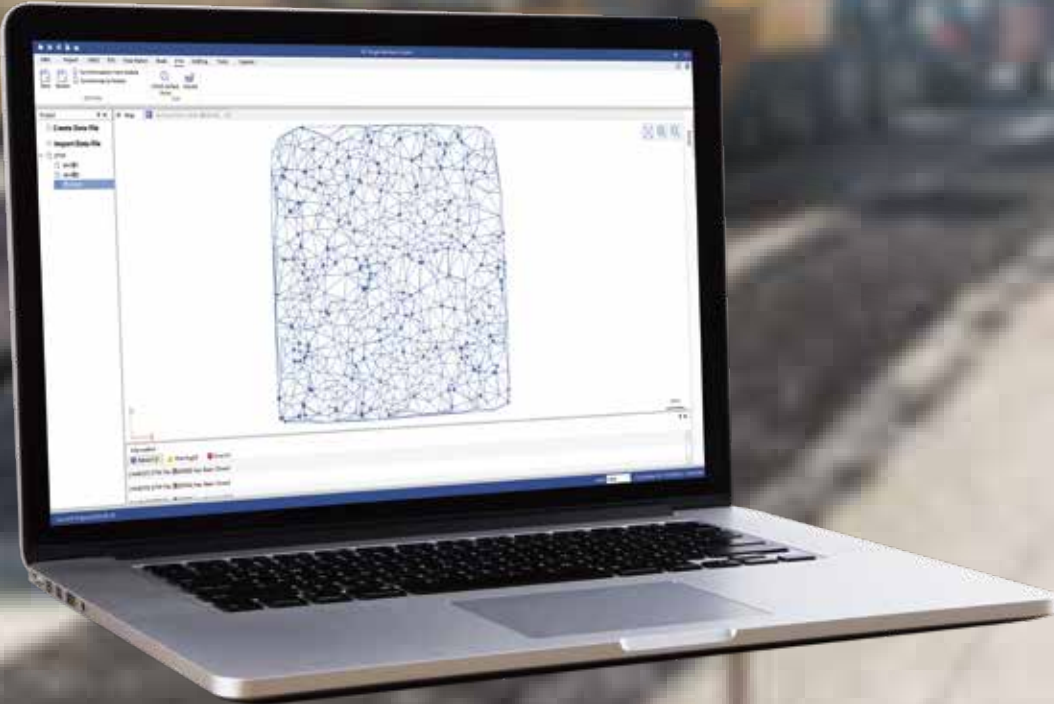
Hi-Target Surveying Instrument Co. Ltd

ADD: Building 13, Tian'An Technology Zone HQ Center, No. 555,
North of Panyu RD, Panyu District, 511400 Guangzhou, China.
www.hi-target.com.cn +86-20-28688296 info@hi-target.com.cn



Hi-Target Business Center

All-in-One
Post-Processing Desktop Software

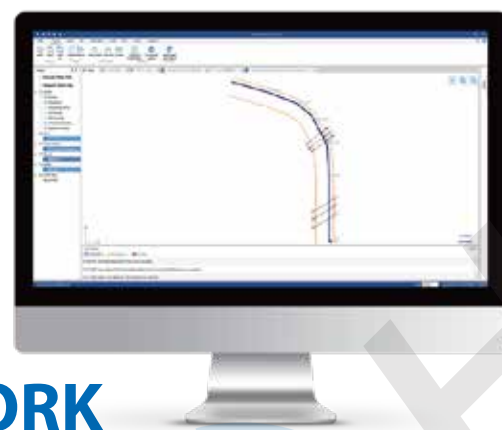


All-in-One

Post-Processing Desktop Software

HBC, the all-in-one post-processing desktop software, supports processing multi-sourced data from all kinds of surveying equipment, including RTK, total station, UAV, GIS, 3D laser and levels. This one-stop service simplifies the workflow and improves the efficiency of field data processing.

HBC enables users to finish the joint operations of multiple pieces of equipment in projects more easily, enabling users to fix various problems, like switching between lots of different processing software and data results that are not interconnected, as well as complex, cumbersome workflows.



JOINT WORK

HBC combines all the procedures of field survey:



Preparation

Surveyor organization (team-building management), coordinate system setting, RTK project control point/stake point input, road design and DTM surface design.



Field survey

GNSS static survey / RTK survey (surveying control).



Post process

GNSS static data processing, RTK Data processing, TS data processing, post mapping.

FUNCTION



GNSS Data Processing

Full constellation support:

GPS/GLONASS/Galileo/BeiDou

Supports the batch processing of more than 100 baselines

Greatly improved accuracy and speed

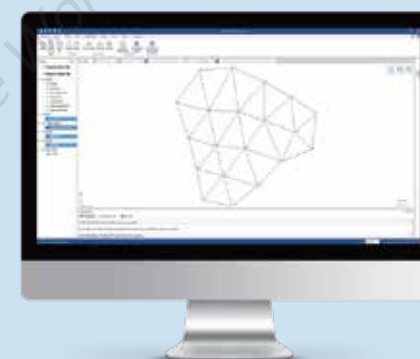
Mapping

Joint processing of various data:

GNSS static data/RTK/Total station data

Massive data management:

Supports GB level data import and smooth browsing



Total Station Data Processing

Various data compatibility:

Hi-Target total station data/COSA traverse data/
South coordinate point data

Adjustment:

Plane adjustment/plane + elevation adjustment

Supports visualization of traverse

Export of adjustment results



RTK & Joint Work

- Multi-task management: Creates/imports multiple RTK project files
- Data preparation: Stake point/control point/graphic
- Code/CAD
- Distribution of measurement tasks
- Field data return to office
- Mapping
- Inspection/export of survey results



Road Design

- Batches multiple road designs: More convenient and efficient for data import
- Supports a variety of road file formats
- Line information is clear at a glance: Centerline/Profile/Cross-section
- Compatible with a more complex road file
- Data check, pile-by-pile table output



DTM

- Variety of DTM formats: Hi-Target/Cass/LandXML
- Batch import point data
- Quick create TIN
- Earthwork calculation and result output