

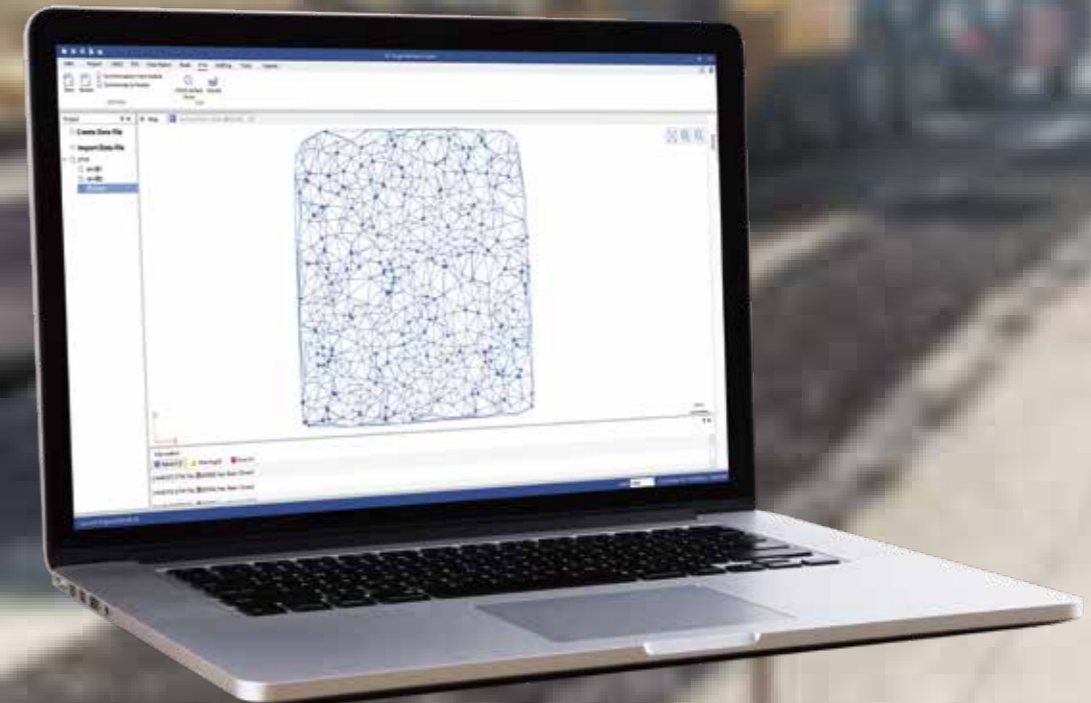
## System Recommendations

<b>Operating system</b>	Microsoft Windows 7/8/10 (64-bit)	
<b>Hardware</b>	<b>Minimum</b>	<b>Recommended</b>
Processor	Intel Core i3	Intel Core i5
RAM	4GB	8GB
ROM	1GB	1TB
GPU	Direct X9 compatible integrated graphics	Direct X9 compatible 2GB discrete graphics
<b>Software License</b>	Software registration code	
<b>Supported Language</b>	Chinese / English	



## Hi-Target Business Center

All-in-One  
Post-Processing Desktop Software



AUTHORIZED DISTRIBUTION PARTNER

200109

### Hi-Target Surveying Instrument Co. Ltd

ADD: Building 13, Tian'An Technology Zone HQ Center, No. 555,  
North of Panyu RD, Panyu District, 511400 Guangzhou, China.

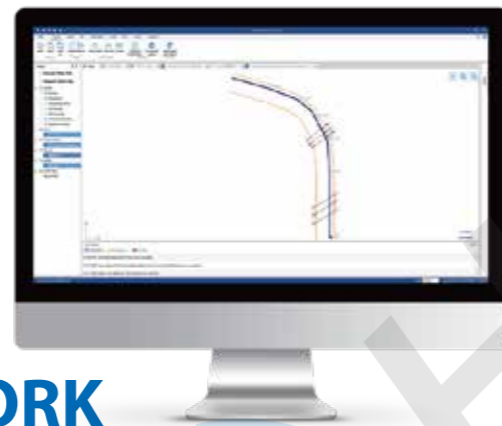
www.hi-target.com.cn +86-20-28688296 info@hi-target.com.cn

# All-in-One

## Post-Processing Desktop Software

HBC, the all-in-one post-processing desktop software, supports processing multi-sourced data from all kinds of surveying equipment, including RTK, total station, UAV, GIS, 3D laser and levels. This one-stop service simplifies the workflow and improves the efficiency of field data processing.

HBC enables users to finish the joint operations of multiple pieces of equipment in projects more easily, enabling users to fix various problems, like switching between lots of different processing software and data results that are not interconnected, as well as complex, cumbersome workflows.



## JOINT WORK

HBC combines all the procedures of field survey:



### Preparation

Surveyor organization (team-building management), coordinate system setting, RTK project control point/stake point input, road design and DTM surface design.



### Field survey

GNSS static survey / RTK survey (surveying control).



### Post process

GNSS static data processing, RTK Data processing, TS data processing, post mapping.

## FUNCTION



### GNSS Data Processing

#### Full constellation support:

GPS/GLONASS/Galileo/BeiDou

Supports the batch processing of more than 100 baselines

Greatly improved accuracy and speed

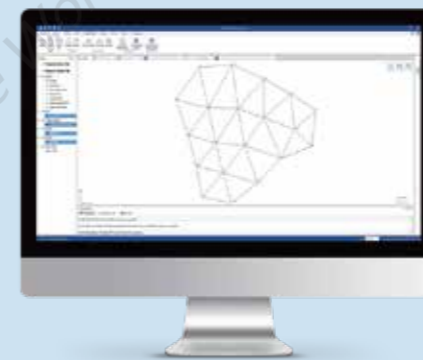
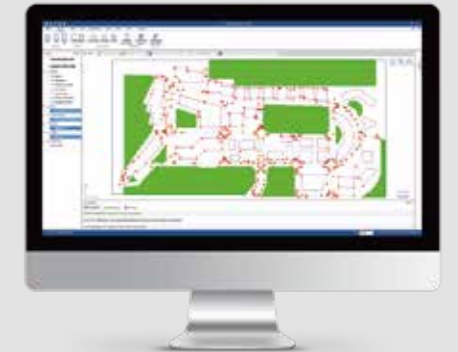
### Mapping

#### Joint processing of various data:

GNSS static data/RTK/Total station data

#### Massive data management:

Supports GB level data import and smooth browsing



### Total Station Data Processing

#### Various data compatibility:

Hi-Target total station data/COSA traverse data/ South coordinate point data

#### Adjustment:

Plane adjustment/plane + elevation adjustment

Supports visualization of traverse

Export of adjustment results



### RTK & Joint Work

- Multi-task management: Creates/imports multiple RTK project files
- Data preparation: Stake point/control point/graphic Code/CAD
- Distribution of measurement tasks
- Field data return to office
- Mapping
- Inspection/export of survey results



### Road Design

- Batches multiple road designs: More convenient and efficient for data import
- Supports a variety of road file formats
- Line information is clear at a glance: Centerline/Profile/Cross-section
- Compatible with a more complex road file
- Data check, pile-by-pile table output



### DTM

- Variety of DTM formats: Hi-Target/Cass/LandXML
- Batch import point data
- Quick create TIN
- Earthwork calculation and result output